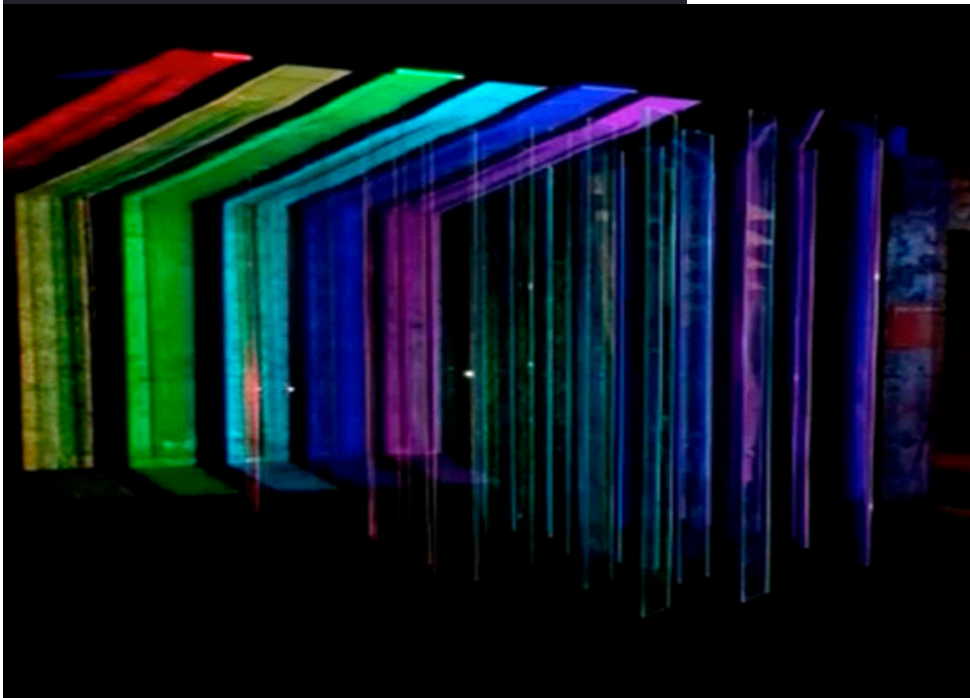




Conwy.  
North Wales.

# Curators



## Joel Cockrill

Joel Cockrill is a co-curator of blinc

A sense of place, and the interplay of sound and light within a space have been a repeated reference in Joel's work across a wide variety of media and creative explorations. These core interests have been the elemental influences for film, performance, audio work and collaboration for the last 25 years.



## Craig Morrison

Craig Morrison is a co-curator of blinc

This year Craig is creating an installation entitled "Green Bay" inspired by the work of Dylan Thomas 's Do Not Go Gentle into That Good Night.

He will also be creating a mapped projection that will be displayed on Plas Mawr, a homage to the Suffrage Movement who celebrate their centenary this year.

# Artists



**OUTCASTING**  
MOVING IMAGE NETWORK

Bobby Abate (USA) makes films and videos that fuse nostalgia, psychodrama, and spectacle with a distinctly modern resonance.

The Evil Eyes, 2011, is a homage to the death of the soap opera and will be exhibited in the blinc cinema truck as part of the Outcasting commission.

## Elizabeth Ashworth

Following on from the experience of writing about colour for Intense Colour Movement at last year's blinc, and excited by the relationship between verbal and visual art forms, Elizabeth is creating new poems in response to visual/digital art.

Elizabeth is currently working on an ACW- funded project, 'Painting the Poem'.



**OUTCASTING**  
MOVING IMAGE NETWORK



Darren Banks (UK) incorporates found and made film footage into sculpture and installation to explore ideas about domesticity, defunct technologies, cinema and the unknown. The work questions the perception of sculpture in relation to objects, film and memory..

Darren Banks will be exhibited in the blinc cinema truck as part of the Outcasting commission

## Mike Bowen

Mike Bowen is an American Artist.

"I exist as an artist to connect the spiritual world with the physical world. Every line, color, sound and light projection seeks to find and reveal the inner truth of our existence on this earth".

1,111 Windows to the Soul is a digital projection that will be exhibited at blinc for the 1st time.





## Neil Coombs

Neil Coombs is a multimedia artist and writer based in Wales. His work is informed by surrealism and, as such, deals with explorations of the marvellous manifested in the everyday.

Neil returns to blinc this year with a work inspired by Georges Bataille's novella 'Story of the Eye'.



## Dymphna D'Arcy

Dymphna is a performer/film maker and writer based in Conwy

Reference to time, place, and motion and the unconscious shards of history that influence the way we respond to a certain place are recurring themes in her work. Central to her practice is the transformative quality of time and the consequential effects of time on place, exploring the intersection between time place and motion and the idea of the past present and future as a co-dependent continuous entity.



## Seth D'Arcy Schewe

Seth is a digital artist, filmmaker and photographer based in North Wales. His work is inspired by the invention of new technology, its rapid development and the impact this has upon society and the manner in which we experience and understand our ever-changing world. He is excited by the use of natural structures and bringing them to life with digital layers.



## Wendy Dawson

Wendy is a sculptor and digital artist living in North Wales, inspired by the human urge to invent, time and our fascination with the world around us. Her piece 'Obscura' is a lens made from ice, and as a Camera Obscura captures the world for a moment so does the ice lens, continually changing and moving, a moment of time that is described by light and then gone. It is as much about the object as it is about the light. This year her 3D projection entitled SWARM will also be on display, commissioned for last year's Blinc Festival, exploring ideas about the collective 'intelligence' of simple lifeforms/programs, and Conwy's historic association with beekeeping.



## Menna Elfyn

Menna Elfyn has published thirteen collections of poetry, children's novels, libretti for UK and US composers as well as plays for television and radio.

Following on from her collaboration last year on Intense Colour Movement, she returns to blinc, inspired by the works of Dylan Thomas.



## OUTCASTING MOVING IMAGE NETWORK

Tessa Garland (UK) originally trained as a sculptor but for many years her work has been preoccupied with the moving image. Cinematic language allows her to explore and create places by piecing and layering together footage of journeys through spaces. She tends to focus on a place, landmark or idea and work with it over a long period time, allowing it to grow in significance.

Tessa is showing as part of the Outcasting commission in the blinc cinema truck.



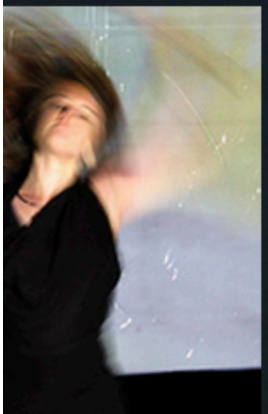
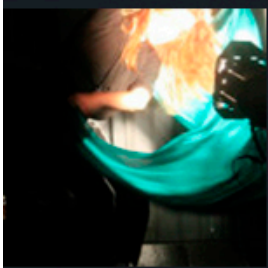
**OUTCASTING**  
MOVING IMAGE NETWORK

Katie Goodwin (UK) 'has been described as a cinematic magpie. Most of her source material is gleaned from the cutting room floor of the film production process. She seeks to reveal the stuff that the audience never sees, reprocessing and exposing moments that would otherwise be lost forever.

Katie is showing as part of the Outcasting commission in the blinc cinema truck.

## Alys Hughes & Elly Strigner

Alys Hughes and Elly Strigner are North Wales artists, local to the area of Conwy, working in dance / physical performance and animation / moving image respectively. Following on from last year's performance at Blinc, 'Hiraeth', a piece about longing, which combined live dance, soundscape, music, and animation, this year they will collaborate again to create a performance which aims to highlight the importance of Welsh culture, language and expression.







**OUTCASTING**  
MOVING IMAGE NETWORK

Kika Nicoleta (Zurich / São Paulo) is a Brazilian artist, filmmaker and independent curator. Her works include single-channel videos, installations, performances, experimental documentaries and photography. Graduated in Film and Video by the University of Sao Paulo, Kika Nicoleta also completed film courses at UCL A University and is currently doing a Master of Fine Arts at the Zurich University of the Arts/.

Kika is showing as part of the Outcasting commission in the blinc cinema truck.



**OUTCASTING**  
MOVING IMAGE NETWORK

John Rowley (Wales) makes work across a wide range of media including theatre, performance, film, sculpture and illustration. Reared in Essex, he has now been resident in Wales since 1990, initially working for the renowned site-specific theatre company, BRITH GOF. In addition to his solo practice he also makes art and performance works with colleague, Richard Huw Morgan as part of good cop bad cop .

John is showing as part of the Outcasting commission in the blinc cinema truck.



**OUTCASTING**  
MOVING IMAGE NETWORK



Ruaidhri Ryan (London) is currently studying a postgraduate degree at the Slade School of Fine Art, University College London, he has exhibited nationally and internationally in film festivals, television and galleries. Ruaidhri observes 'perpetual longing and dissatisfaction' through a deconstruction of cinema and images, of people and place.

Ruaidhri is showing as part of the Outcasting commission in the blinc cinema truck.



## Tom Senior

Tom is a Leeds-born animator /illustrator/director and graduate of the Royal College of Art. He is represented by the animation studio Sherbet, but also works as a designer and animator on a freelance basis. Tom currently lives in London.

## Chris Squire

Chris Squire is an artist who creates magical and mesmerising participatory projection installations. His work is highly accessible and engages the audiences in a unique and thoroughly enjoyable experience that is open to everyone



## Sharon Teear

Sharon is an emerging visual artist within Wales. After a previous period of R&D funded by the ACW, she has now started to develop a new strand of work exploring the link between two forms of dance and art. Using light art she explores how the two forms overlap and fuse together in the same space and time. The highlighted dancers and light pathways narrate movement cutting through space.



## Rhys Trimble

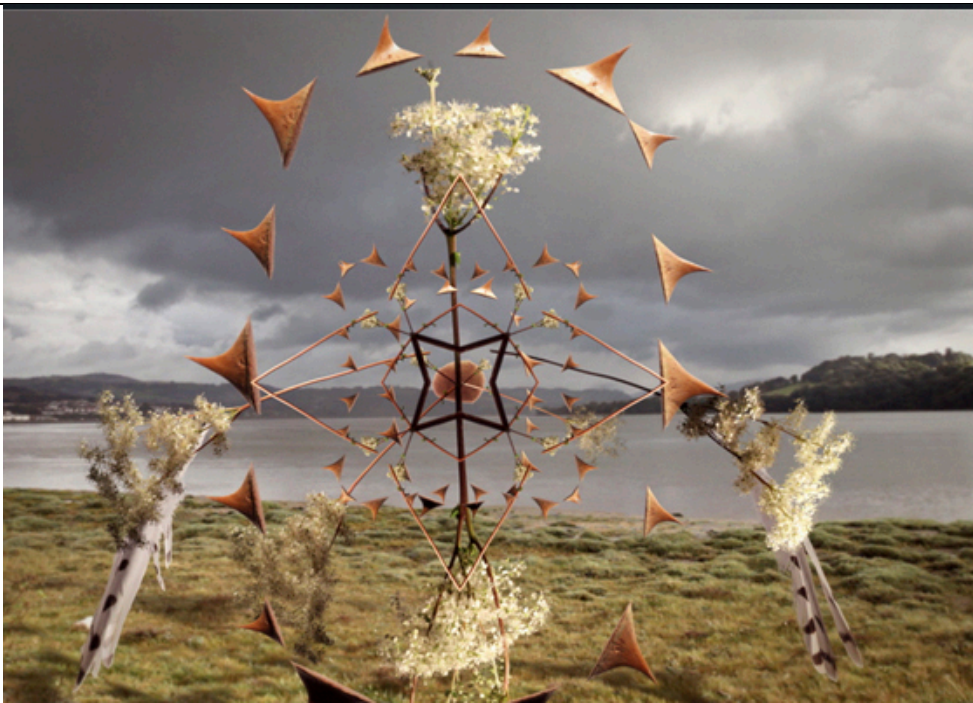


Rhys Trimble is a bilingual poet and performer based in Bethesda interested in medieval Welsh praise poetry such as the cywyddwyr as part of an overall passion for the avant garde and linguistic experimentation - This year Rhys is using the bardic staff pastwn beats to activate digital media such as projection and recording in a live performance of an action/ reaction cyberpoem assisted by the technological innovator Zack De Santos.

## Sean Vicary & Steve Knight

Sean is an artist based in West Wales, Steve Knight is a software developer based in Pembrokeshire.

They will be collaborating on a new work for Blinc 2013 inspired by the origins of birdwatching and current developments in surveillance technology.



## Josh Wedlake

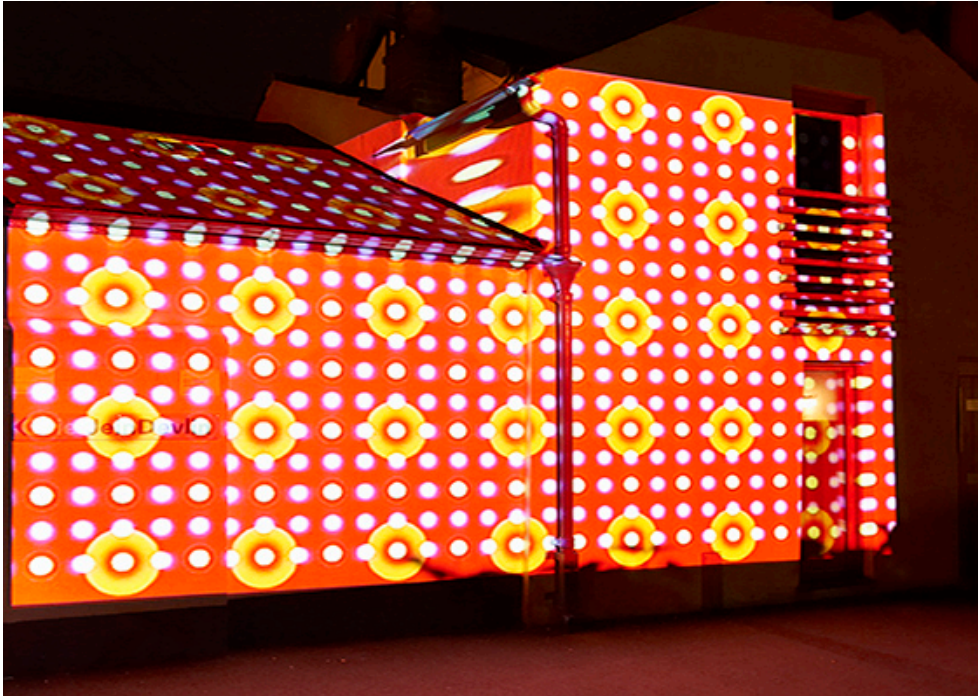
Josh first became interested in animation while working towards his BA in Architecture at the University of Cambridge. Working heavily with 3D modelling he designed buildings which were intended to be experienced as cinematic sequences and exhibited strong use of narrative structure in their layout. Following his BA, he worked as a volunteer artist on Bassam Kurdali's 'Tube' project in the BitFilms incubator lab at Hampshire College, Northampton, Massachusetts. There he focussed primarily on model and set design as well as being involved in special effects programming.



## Alan Whitfield

Alan Whitfield is a Digital Artist and Poet. His work is engrained in his Northern working class upbringing. His works responds to social commentary and documentation of surroundings. Alan returns to Blinc for a third year in his evolution as a local digital Artist. This years work interrogates the spaces that are around us in everyday life that while we may feel part of them we are unable to brake there inner sanctity and evolve any further connections with. Alan aims to engage the viewer with his 'look but don't touch' installation





## Ronan Devlin

Afterimage,

An afterimage is an optical illusion that refers to an image continuing to appear in one's vision after exposure to the original image has ceased.

This work by Ronan Devlin with an accompanying original soundtrack by David J. Knowles is intended to be shown on a large scale to create a meditative space.

## Supported by



Llywodraeth Cymru  
Welsh Government



## Programme Times and Locations.

### Friday Night.

Laser Bridge. 7.00pm until 12pm

Town Projections. 6.30pm until 10.30pm

Cinema Truck. 3.00pm-10.00pm

### Saturday Night

Laser Bridge. 7.00pm until 12pm

Town Projections. 6.30pm until 10.00pm

Cinema Truck. 3.00pm-10.00pm

Town Projections/Artworks in the following locations:

The Castle, The Towers, The British Legion Car park, Plas Mawr and the Quay. Lasers placed in Degannwy and Conwy to span the river estuary.



Contact:

Blinc CIC  
The Civic Hall  
Castle Street  
Conwy  
North Wales.  
L132 8AY

Email Curators:

[joel@blincdigital.com](mailto:joel@blincdigital.com)

[craig@blincdigital.com](mailto:craig@blincdigital.com)

Office

[paperwork@blincdigital.com](mailto:paperwork@blincdigital.com)

Website:

<http://blincdigital.com>

Facebook

<https://www.facebook.com/blincdigital?ref=hl>

Twitter

<https://twitter.com/blincdigital>

Google+

<https://plus.google.com/104433839076188987046/posts>